

Hariom Pattern & Engineering

PLOT NO A-23, SWASTIK IND.ESTATE, NR.BAKROL SMASHAN GRUH, B/H.BAKROL TALAV,
TA.DASKROI DIST.AHMEDABAD-382430.

CONTACT NO: 9898541885 (MR.BHAVINBHAI SUTHAR)

Email id: hariompattern@myyahoo.com/bhavin.suthar@rocketmail.com

Website: www.hariompattern.com

MFG OF.WOODEN & ALU. PATTERN

Dear Sir,

- The Company Was Started By **Mr. BabuBhai Suthar** In 1985 By The Name Of "Purnima Pattern Works". Now, the Company Was Promoted and Is Presently Led In the Market by the Name of "**Hari Om Pattern &Engineering**", Who Is Handling By **Mr. Bhavinbhai Suthar**.
- We Have another Farm **AARADHYA PATTERN & ENGINEERING** is Sister Consulting Farm.
- M/S. Hari Om Pattern & Engineering Has Been Providing Quality Pattern Making Services To Customers Throughout India. We Specialize In Intricate Large & Medium Size Patterns Made Of Wooden & Metal Pattern.
- We Have Innovative Crew Of Designers Having High Quality Stylish Designing Attitude. Our Firm Is Supported By A Qualified And Devoted Team Of Professionals That Enables To Offer A Quality Services. They Are Informed And Have Excellent Technical Know How In Their Particular Field To Work. This Helps Us To Offer Customization Facility And Develop The Range As Per The Detailed Specifications Given By Our Clients.
- Our Company is built in 800 Square Foot.

List of Industries for Whom We Can Work:

- CEMENT MILL & MINING & VSMS
- WIND TURBINES / WIND MILL
- AERATED WATERS FILING/PACKAGING MACHINERY
- HYDRAULIC EQUIPMENT
- OIL & GAS PARTS
- STEAM TURBINES/GAS TURBINES
- AUTOMOTIVE COMPONENTS (CASTINGS) AND HAND MOLDING MACHINES
- INJECTION MOLDING MACHINES
- GAS COMPRESSOR EQUIPMENT
- MACHINE TOOLS
- AIR COMPRESSORS & RELATED EQUIPMENT
- PHARMACEUTICAL INDUSTRY
- MOTOR BODY
- PUMPS & VALVE
- BOWL MANTLE & UPPER MANTLE

Capabilities:

MACHINE DESCRIPTION	X- AXIS	Y- AXIS	Z- AXIS
CNC ROUTER-1	3000	3100	700
CNC ROUTER-2	3000	2000	550
CNC ROUTER-3	2000	1500	450
VMC	1100	650	650
PORTABLE HAND MACHINERY			
LATHE MACHINE	5 (FEET)		
SURFACE MACHINE-1	13"X2		
SURFACE MACHINE-2	10"		
SURFACE MACHINE-3	10"		
SURFACE MACHINE-4	9"		
DRILL MACHINE-1	19 MM		
DRILL MACHINE-2	12 MM		
CUTTING BANDSAW-1	30"		
CUTTING BANDSAW-2	24"		
CUTTING BANDSAW-3	18"		
CRANE CAPACITY :- 5 TON			

Measuring Instrument Capabilities:

HEIGHT GAUGE	24" (600 MM)
VERNIER CALIPER-1	0 - 1000 MM
VERNIER CALIPER-2	0 - 600 MM (3 NOS)

Note:

- Also we have Provide In house 3D scanning facility.

SOFTWARE DETAIL:

SR NO.	SOFTWARE	DETAIL
1	SOLIDWORKS	3D MODELING
2	POWERMILL	PROGRAMMING
3	SOLTRACK TECNOLOGIES	ACCOUNT

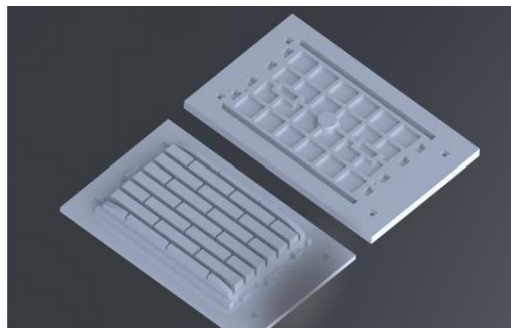
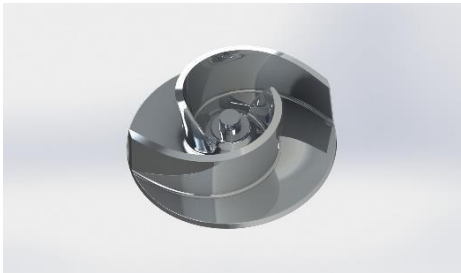
NUMBER OF STAFF (WHITE AND BLUE COLLAR):

SR NO.	OFFICE STAFF	LABOUR STAFF
1	06 PERSONS	35 PERSONS

STORAGE AREA:

SR NO.	STORAGE AREA
1	TOTAL: 800 Square Foot
2	STORAGE: 150 TO 200 Square Foot.

PATTERN PHOTOGRAPHS:





CERTIFICATE

This is to Certify that
Quality Management System

of

HARI OM PATTERN & ENGINEERING

PLOT NO A/23, SWASTIK IND. ESTATE, NEAR BAKROL SMASHAN GRUH, B/H.
BAKROL TALAV, BAKROL, TA- DASKROI, AHMEDABAD GUJARAT, 382430, INDIA

has been independently assessed by DBS
and is compliant with the requirement of:

ISO 9001:2015

For the following scope of activities:

**ALL TYPE OF KINDS OF WOODEN AND ALUMINIUM PATTERN &
ENGINEERING WORK.**

Certificate Number: Q-205022071802

Date of Certification:	18th July 2022
1 st Surveillance Audit Due:	17th July 2023
2 nd Surveillance Audit Due:	17th July 2024
Certificate Expiry:	17th July 2025

This Certificate is property of DBS Certifications and remains valid
subject to satisfactory surveillance audits

Head of Certification



The certificate remains the property of DBS Certifications Private Limited, to whom it must be returned upon request.

DBS CERTIFICATIONS PVT. LTD.

142, 11th Floor, Avtar Enclave, Paschim Vihar, Delhi-110063, (INDIA) info@dbscertification.com www.dbscertification.com

ACCREDITED BY:

International Accreditation Service (IAS) 3060, Sarum Street Suite 100, Brea, Ca 92521-1732, United States of America